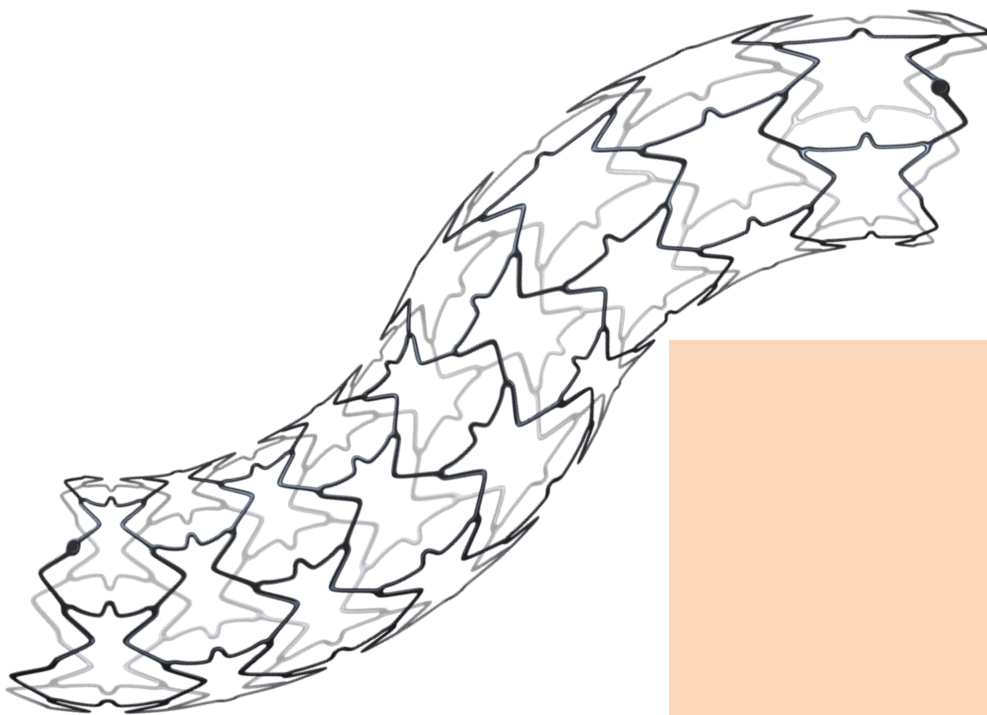


Radix2

RENAL BALLOON EXPANDABLE STENT

Radix2 is a stent with a progressive multicellular design for treatment of the renal arteries

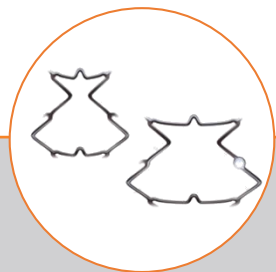
- Excellent scaffolding proximally and good flexibility distally thanks to the unique progressive close cell design
- Proven biocompatibility enabled by Carbofilm™ coating, accelerating the rate of endothelization and strut coverage, reducing thrombogenicity
- Platinum markers at stent edges allow unmatched placement and visualization accuracy



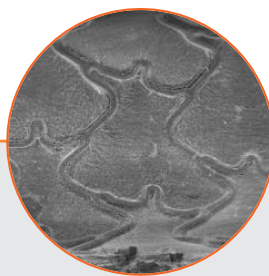
Radix2

RENAL BALLOON EXPANDABLE STENT

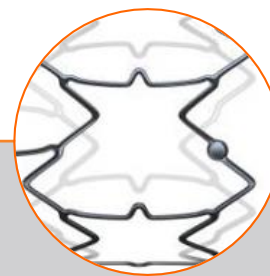
UNIQUE FEATURES



Excellent scaffolding proximally and good flexibility distally thanks to the unique progressive close cell design

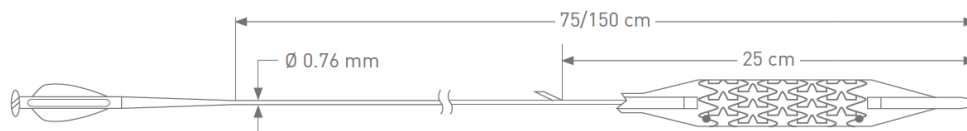


Proven biocompatibility enabled by Carbofilm™ coating, accelerating the rate of endothelization and strut coverage, reducing thrombogenicity



Platinum markers at stent ends allow unmatched visualization and placement accuracy

TECHNICAL DATA



CATHETER SPECIFICATIONS	
Category:	Rapid Exchange balloon delivery system
Introducer Sheath compatibility:	5F
Guiding catheter compatibility:	6F
Guidewire compatibility:	0.018"
Usable catheter length:	75 - 150 cm
Nominal Pressure:	7 - 8 atm
Rated Burst Pressure:	15 atm

STENT SPECIFICATIONS	
Category:	Carbofilm™ Balloon Expandable BMS
Material:	Stainless Steel AISI 316 LVM
Strut Coating	Carbofilm™
X-ray visibility:	Two dot platinum markers at stent ends
Foreshortening	Zero foreshortening during stent expansion

ORDER INFORMATION RADIX2

Usable Catheter Length	L [mm]		12	17
	Ø [mm]			
75 cm	5		ICRW5012S	ICRW5017S
	6		ICRW6012S	ICRW6017S
	7		ICRW7012S	ICRW7017S
150 cm	5		ICRW5012L	ICRW5017L
	6		ICRW6012L	ICRW6017L
	7		ICRW7012L	ICRW7017L

www.alvimedica.com

Please contact your local sales representative for product availability. The images shown within this document are of a purely illustrative nature and are not intended to depict reality.

Please consult product labels and package inserts for indications, contraindications, hazards, warnings, cautions and instruction for use.

©2020, Alvimedica. All Rights Reserved.

Manufactured by: CID S.p.A.
member of Alvimedica group
Via Crescentino, sn - 13040 Saluggia (VC), Italy

