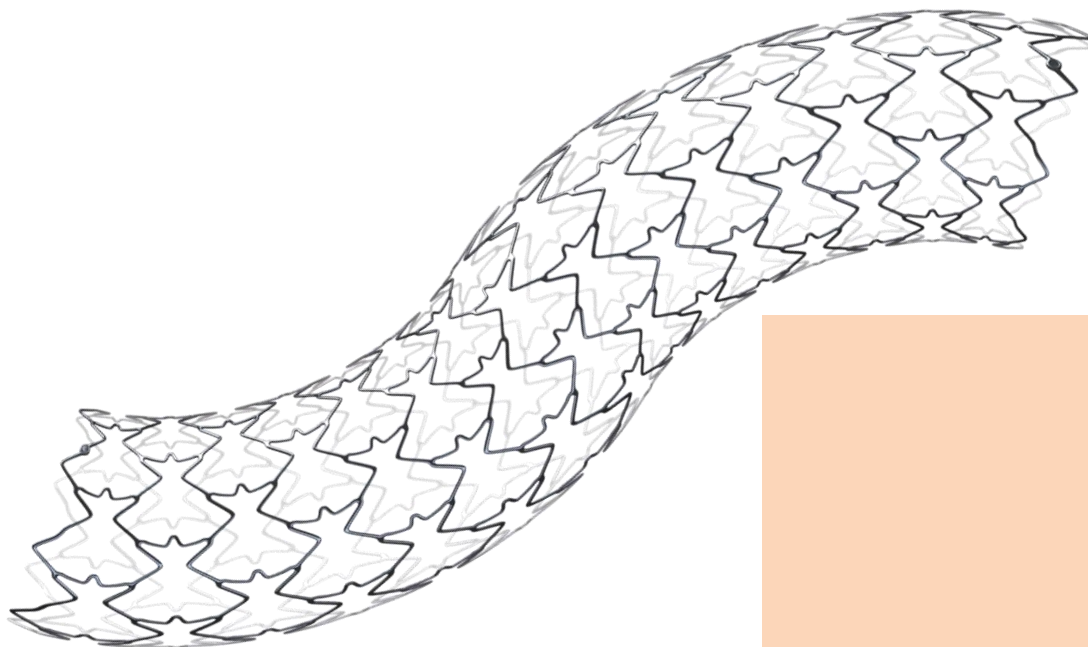


# Isthmus Logic

CoCr BALLOON EXPANDABLE STENT FOR ILIAC VESSELS

Isthmus Logic is a Cobalt Chromium stent with Bio Inducer Surface technology for the treatment of the iliac vessels.

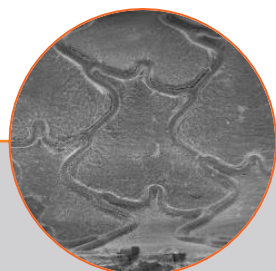
- Proven bio and haemo-compatibility enabled by the Bio Inducer Surface coating, which accelerates the rate of endothelialization and reduces thrombogenicity
- Uniform radial force and excellent scaffolding with a unique cell architecture
- Platinum markers and no stent foreshortening allow unmatched placement accuracy and visualization



# Isthmus Logic

CoCr BALLOON EXPANDABLE STENT FOR ILIAC VESSELS

## UNIQUE FEATURES



BIS coating accelerates the rate of endothelialization and reduces thrombogenicity

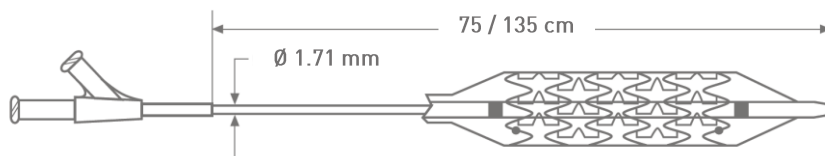


Uniform radial force and excellent scaffolding with a unique cell architecture



Platinum markers at stent ends allow unmatched visualization and placement accuracy

## TECHNICAL DATA



CATHETER SPECIFICATIONS	
Category:	Over The Wire (OTW) delivery system
Guiding catheter compatibility:	6F
Guidewire compatibility:	0.035"
Usable catheter length (UCL):	75 - 135 cm
Nominal Pressure:	7 - 8 atm
Rated Burst Pressure:	10 - 12 atm

STENT SPECIFICATIONS	
Category:	Bio Inducer Surfaced Balloon Expandable BMS
Material:	L605 (CoCr alloy)
Strut Coating	Bio Inducer Surface
X-ray visibility:	Two dot platinum markers at stent ends
Foreshortening	Zero foreshortening during stent expansion

## ORDER INFORMATION ISTHMUS LOGIC

Usable Catheter Length	L [mm] ∅ [mm]	19	29	39	49	59
		75 cm	ICLC6019S	ICLC6029S	ICLC6039S	ICLC7049S
75 cm	6	ICLC7019S	ICLC7029S	ICLC7039S	ICLC8049S	ICLC8059S
	7	ICLC8019S	ICLC8029S	ICLC8039S	ICLC9049S	ICLC9059S
	8	ICLC9019S	ICLC9029S	ICLC9039S	ICLC10049S	ICLC10059S
	9	ICLC10019S	ICLC10029S	ICLC10039S		
	10					
135 cm	6	ICLC6019L	ICLC6029L	ICLC6039L		
	7	ICLC7019L	ICLC7029L	ICLC7039L	ICLC7049L	ICLC7059L
	8	ICLC8019L	ICLC8029L	ICLC8039L	ICLC8049L	ICLC8059L
	9	ICLC9019L	ICLC9029L	ICLC9039L	ICLC9049L	ICLC9059L
	10	ICLC10019L	ICLC10029L	ICLC10039L		

[www.alvimedica.com](http://www.alvimedica.com)

Please contact your local sales representative for product availability. The images shown within this document are of a purely illustrative nature and are not intended to depict reality.

Please consult product labels and package inserts for indications, contraindications, hazards, warnings, cautions and instruction for use.

©2021, Alvimedica. All Rights Reserved.

Manufactured by: CID S.p.A.  
member of Alvimedica group  
Via Crescentino, sn - 13040 Saluggia (VC), Italy

