

product name	stent dimensions	
	diameter [mm]	lengths [mm]
2.00 Ephesos™ II Delivery System	2.00	9 - 12 - 15 - 18 - 20
2.50 Ephesos™ II Delivery System	2.50	9 - 12 - 15 - 18 - 20 - 25 - 28 - 32
2.75 Ephesos™ II Delivery System	2.75	9 - 12 - 15 - 18 - 20 - 25 - 28 - 32
3.00 Ephesos™ II Delivery System	3.00	9 - 12 - 15 - 18 - 20 - 25 - 28 - 32
3.50 Ephesos™ II Delivery System	3.50	9 - 12 - 15 - 18 - 20 - 25 - 28 - 32
4.00 Ephesos™ II Delivery System	4.00	6 - 8 - 9 - 12 - 15 - 18 - 20 - 25 - 28 - 32
4.50 Ephesos™ II Delivery System	4.50	6 - 8 - 9 - 12 - 15 - 18 - 20

Ephesos™ II Delivery System	> Nominal Balloon Pressure [atm]	= 8 atm
Ephesos™ II Delivery System	> Rated Burst Pressure [atm]	= 16 atm



EPHESOS™ II

CORONARY STENT DELIVERY SYSTEM |



EPHESOS™ II

CORONARY STENT DELIVERY SYSTEM |

002

- 001 CORACTO
- 002 EPHESOS™ II
- 003 CONSTANT
- 004 COMMANDER
- 005 TURQUOISE™ PTCA
- 006 INVADER™ PTCA
- 007 INVADER™ CTO
- 008 ALVIGUIDE
- 009 ALVISION
- 010 CORAXEL

april 2010

design | STUDIOE2 | www.studioe2.com.tr

istanbul trakya serbest bölgesi
ferhatpaşa mahallesi | Atatürk bulvarı
manolya sokak | no:7
çatalca | istanbul | TÜRKİYE

phone > +90 212 786 60 80 pbx
fax > +90 212 786 60 90
info@alvimedica.com

www.alvimedica.com

FROM GENIUS IDEAS TO HI-TECH INNOVATIONS

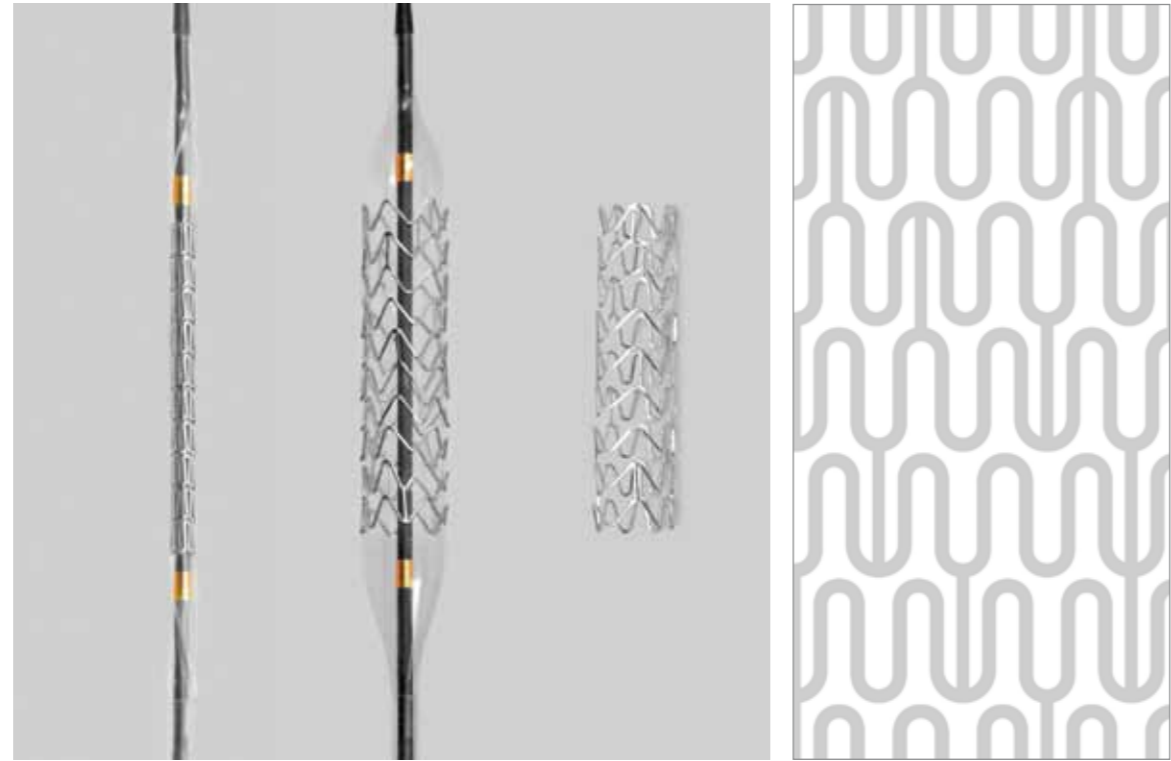


EPHESOS™ II

CORONARY STENT DELIVERY SYSTEM

High radial strength
Optimum flexibility

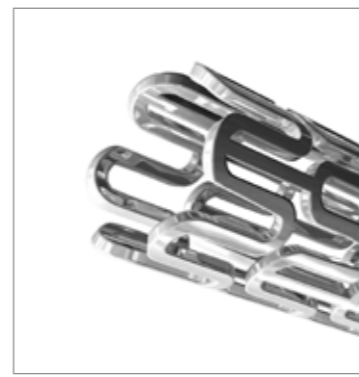
The stent design of Ephesos™ II provides homogeneous stent expansion for optimum vessel coverage and outstanding angiographic results. The unique stent design gives high radial strength and provides optimum flexibility to reach native tortuous vasculature.



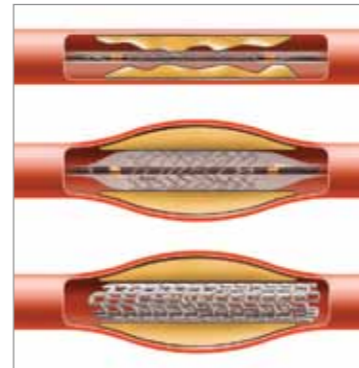
stent product information



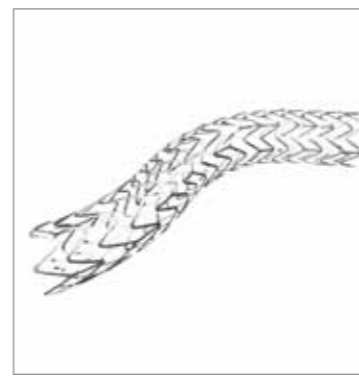
Stent Material
The material used is 316LVM stainless steel. This material has been used in manufacturing of stents for many years and has proven itself as safe and effective.



Radial Strength
The Ephesos™ II has high radial strength due to its material properties and unique design.



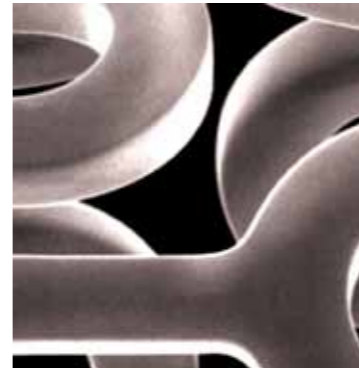
Recoil
Low recoil rate (3%) ensures nominal target lesion diameter while also decreasing the restenosis rate.



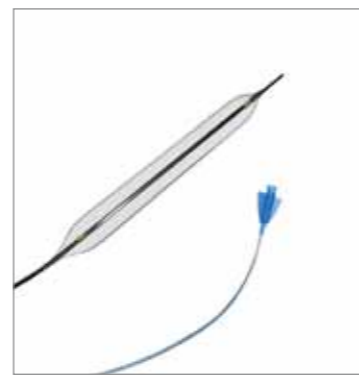
Flexibility
Ephesos™ II stent design provides optimum flexibility to reach lesion with tortuous characteristics.



Homogeneous Stent Expansion
Stent design of the Ephesos™ II allows homogeneous stent expansion which provides optimum vessel coverage.



High Quality Electro Polishing
High quality polishing decreases the potential risk of thrombosis and restenosis.



Delivery System
The hydrophilic coating, carbon reinforced inner lumen and low balloon profile combines to improve pushability.

Ephesos™ II stent compliance chart

	2.00 mm	2.50 mm	2.75 mm	3.00 mm	3.50 mm	4.00 mm	4.50 mm
pressure	diameter	diameter	diameter	diameter	diameter	diameter	diameter
[atm]	[mm]	[mm]	[mm]	[mm]	[mm]	[mm]	[mm]
4.0	1.79	2.35	2.58	2.74	3.21	3.78	4.30
5.0	1.84	2.40	2.64	2.85	3.29	3.83	4.36
6.0	1.90	2.45	2.69	2.90	3.38	3.90	4.41
7.0	1.96	2.48	2.72	2.94	3.45	3.95	4.46
8.0	NOM	2.00	2.50	2.75	3.00	3.50	4.00
9.0	2.06	2.53	2.81	3.05	3.55	4.03	4.52
10.0	2.09	2.56	2.84	3.08	3.59	4.06	4.54
11.0	2.14	2.60	2.87	3.11	3.65	4.09	4.57
12.0	2.17	2.62	2.89	3.15	3.68	4.11	4.60
13.0	2.20	2.65	2.91	3.18	3.71	4.14	4.62
14.0	2.23	2.68	2.93	3.22	3.75	4.17	4.64
15.0	2.25	2.70	2.95	3.25	3.78	4.20	4.66
16.0	RBP	2.28	2.74	2.97	3.28	3.81	4.23
17.0	2.30	2.77	3.00	3.32	3.85	4.26	4.71
18.0	2.32	2.81	3.03	3.36	3.88	4.29	4.73
19.0	2.34	2.84	3.06	3.40	3.92	4.32	4.75
20.0	2.36	2.87	3.10	3.43	3.96	4.36	4.78
21.0	2.37	2.91	3.14	3.46	4.00	4.40	4.81
22.0	ABP	2.39	2.94	3.19	3.49	4.08	4.44
NOM > NOMINAL PRESSURE							
RBP > RATED BURST PRESSURE							
ABP > AVERAGE BURST PRESSURE							
BALLOON SHAFT > 150 cm							